



LEAP
 Gwen Theron (PhD) ■ PrLArch no 97082
 Landscape Architect ■ Environmental Planner
 Imbrilinx cc 2010/089810/23 ■ P.O. Box 13185 ■ Hatfield 0028
 Fax 086 606 6130 ■ 083 302 2116 ■ gwen.theron@telkomsa.net



SITE NOTICES

PHOTO REPORT

Site notices were put up and hand notices were distributed on the 15th of June 2012

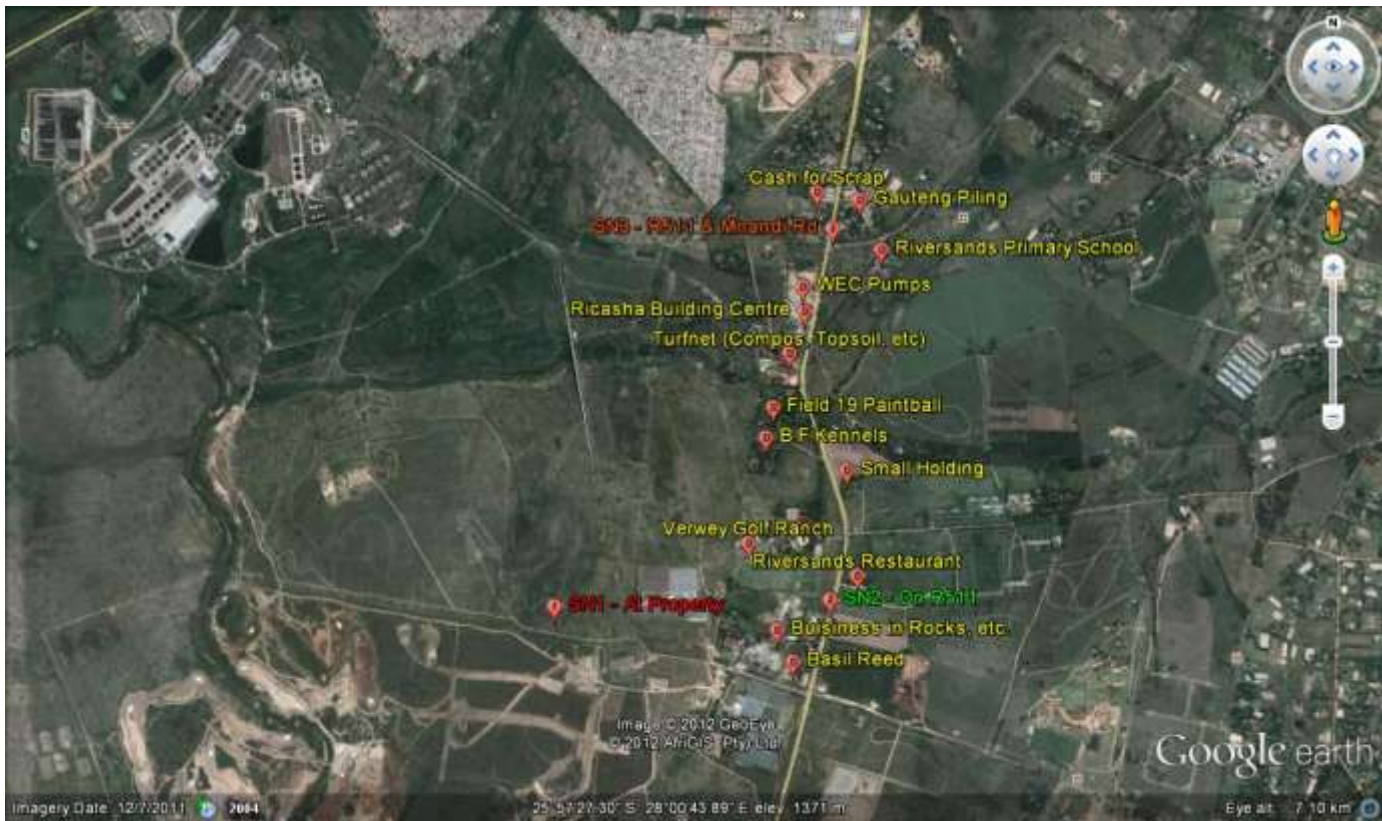


Figure 1: Location of Site Notices and drop-offs of hand notices



Figure 2: Site notice on R511



Figure 3: Site notice at Property



Figure 4: Site Notice at R511 and Mnandi Road